

# ForkSafe™

Certified Impact Protection Barrier System



CERTIFIED IMPACT PROTECTION



[dexsafe.com](https://dexsafe.com)



[hello@dexsafe.com](mailto:hello@dexsafe.com)

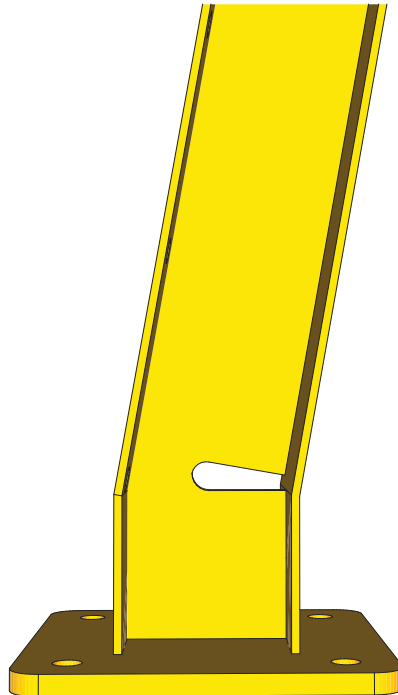


09 275 5580

A warehouse is a unique environment which combines machinery, people and large amounts of product. This mixture can, at times, create a hazardous work environment. Because of this, warehouses must consider unique safety procedures and guidelines.

Installing a FORK-SAFE Barrier System is one way of ensuring safety for your staff and visitors.

- 🔒 Safe
- 🔒 Smart Looking
- 🔒 Modular
- 🔒 Easy to install



## FULLY MODULAR

The ForkSafe barrier system is fully modular, making it suitable for most applications where impact protection is required. Posts are available in 3 different heights, and rails come in a range of standard sizes, but can also be cut to length.

## CZT TECHNOLOGY

The new Crumple Zone Technology sets the ForkSafe barrier system apart. Our unique post is designed to absorb the impact in such a way that reduces the chance of 'shock' to the forklift driver, and also protects your concrete floor from 'blowing out'.

## CERTIFIED SYSTEM

The ForkSafe system is designed to meet and exceed the requirements of relevant AS/NZS standards. These are AS/NZS3404 and AS/NZS2312. For more information around standards and certification, check out our FAQ section on [dexsafe.com](https://dexsafe.com)

The ForkSafe barrier is a quality engineered barrier suitable for factories. The barrier has been designed to provide for ease of installation, safety of pedestrians, and a deterrent for forklifts and other mobile plant inside factories.



## SINGLE OR LONG RUNS

Whether you need to do short or long runs, the FORK-SAFE Barrier system is the solution. Modular components make custom and tailored solutions easy.



## INTEGRATABLE DESIGN

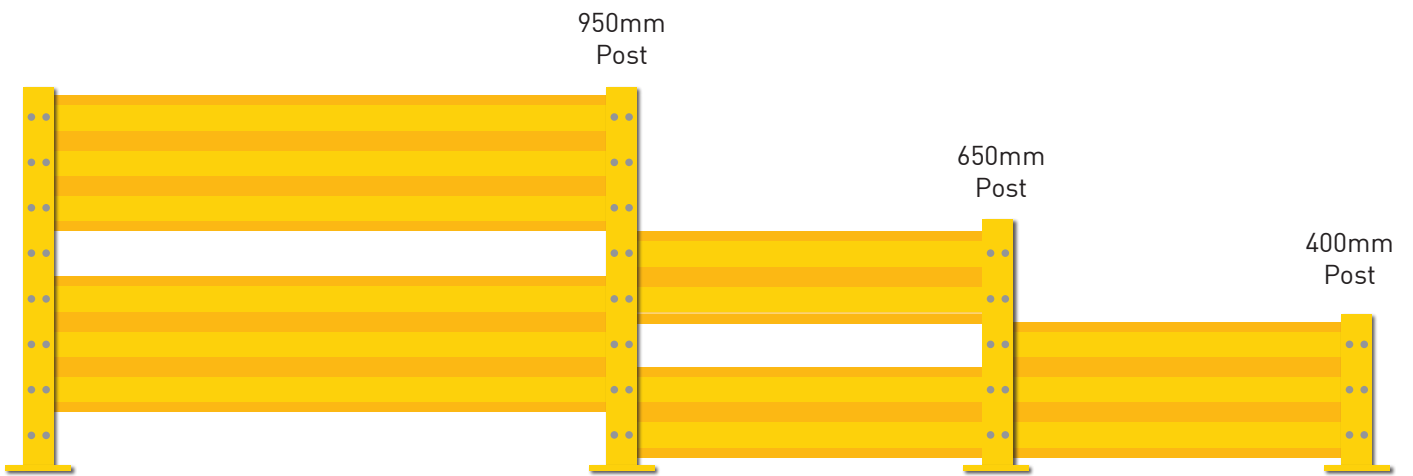
The FORK-SAFE Barrier System can be integrated with our PED-SAFE barrier system for complete protection.



## REPLACEABLE PARTS

All components of the FORK-SAFE Barrier System are fully replaceable should any damage occur.

	POST HEIGHTS	RAIL LENGTH	FINISH
FORKSAFE	400MM	2400MM	POWDER COATED
	650MM		HOT DIP GALV
	950MM		POWDER COATED OVER HOT DIP GALV



Maximum 2400mm spacing between posts

Flexible rail configurations

## PEDSAFE

### PEDESTRIAN SEGREGATION BARRIER SYSTEM



The PedSafe barrier system and other warehouse equipment can be found at [dexsafe.com](http://dexsafe.com)